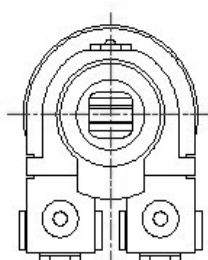
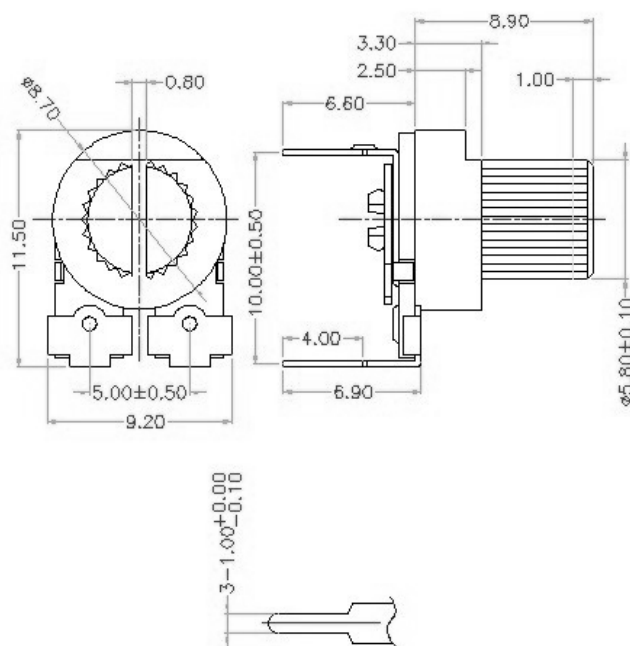


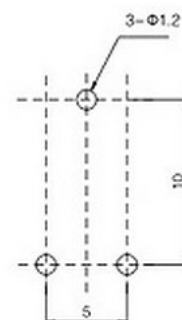
VTR-A-SR08 Phenolic Carbon Semifixed Variable Resistor

ELECTRICAL CHARACTERISTICS		CLIMATIC CHARACTERISTICS	
Standard Resistance Range	100Ω - 2.2M Ω	Operating Temp.	-5℃-40℃
Resistance Tolerance	±10%; ±20% ; ±30%	Temp.Characteristics	Resistance change within +5 ~-30% after 5 hoursat 70℃
Residual Resistance	Max.5% of Nominal Resistance,but under 30 Ω		
Resistance Taper	Linear	Humidity Char.	Max resistance change within ±20% after 350 hours loaded at 40℃ and R.H.90%.
Rated Power	0.1W		
Operating Voltage	50V max	SOLDERING CONDITIONS	
Roteational Life	Max.±15% change in resistance after 100 unloaded rotations.	Temperature	260℃
Load Life	Max.±15% change in resistance after 3 hours loaded.	Time	3seconds
MECHANICAL CHARACTERISTICS			
Rotational Angle		260 ⁰ ± 10 ⁰	
Rotational Torque		50-350gf.cm.	
Stop-end Strength		500g.cm minimum	
Mechanical Strength:		Bakelite Base not to be broken down under a force of 1 kg.	

SR08



RECOMMEND P.C.B LAYOUT



Note: Specification are subject to change without notice. For more updated information, please visit our website.